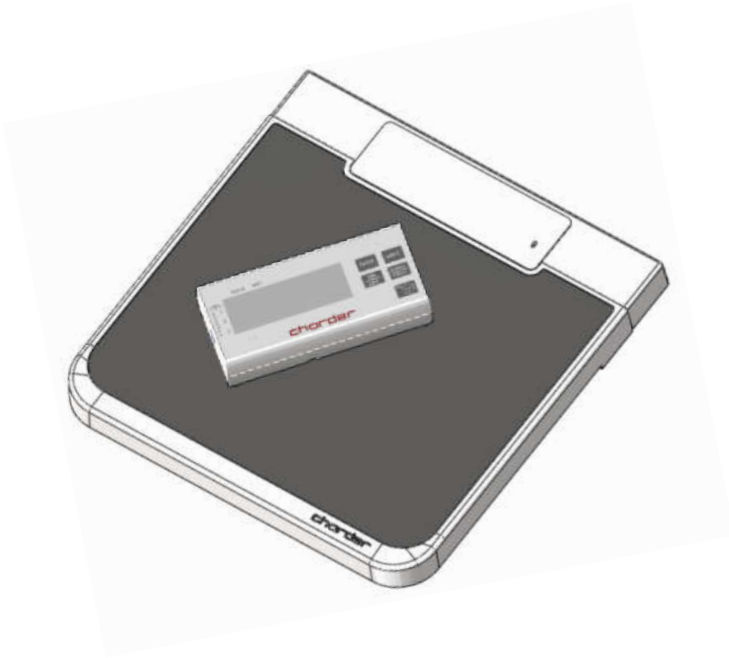


chorder®



**MS 6121R**  
Wireless scale  
**USER MANUAL**

*Please keep the instruction manual at hand all the time for future reference.*

---

## **TABLE OF CONTENTS**

TABLE OF CONTENTS .....	1
PREFACE .....	2
GENERAL INFORMATION .....	2
SAFETY INSTRUCTION .....	2
ENVIROMENTAL .....	3
CLEANING .....	3
MAINTENANCE .....	3
WEIGHING OPERATION .....	4
WARRANTY-LIABILITY .....	4
DISPOSING OF THE SCALE .....	5
SPECIFICATIONS .....	6
POWER SUPPLY & LOW BATTERY .....	7
ABOUT AUTO OFF FUNCTION .....	7
PANEL AND LCD DISPLAY .....	8
LCD DISPLAY .....	8
KEY FUNCTION DESCRIPTION: .....	8
INSTRUCTION OF HOLD FUNCTION .....	9
INSTRUCTION OF USING BMI FUNCTION .....	10
INSTRUCTION OF UNIT SWITCH .....	11
INSTRUCTION OF CONNECTING WIRELESS SCALE .....	12
SWITCHING WIRELESS CHANNEL .....	13
INSTALLING THE BATTERY .....	14
INSTRUCTION OF CHARGE & CONNECTION .....	16
USING PRINT FUNCTION .....	17
ERROR MESSAGE .....	20


## PREFACE

Thank you for choosing CHARDER MEDICAL product. All features of this product were designed to state of the art and are optimized for simple and straightforward use. If you have any queries or experience any problems not addressed in the operating instructions, please contact your CHARDER MEDICAL service partner, or visit us on the Internet at [www.chardermedical.com](http://www.chardermedical.com)

## GENERAL INFORMATION

We strongly recommend you use the scales on flat and hard surface. Any soft surface, like carpet will cause inaccuracy.

## SAFETY INSTRUCTION

 Before putting the device into use, please read with care the information given in the Operating Instructions. They contain important instructions for installation, proper use and maintenance of the device.

The manufacturer shall not be liable for damages arising out of failure to heed the following instructions:

- ◆ Don't leave the baby unattended on scale.
- ◆ When using electrical components under increased safety requirements, always comply with the appropriate regulations.
- ◆ Improper installation will render the warranty null and void.
- ◆ Ensure the voltage marked on the power supply unit matches your mains power supply.
- ◆ This device is designed for use indoors.
- ◆ Observe the permissible ambient temperatures for use
- ◆ The device meets the requirements for electromagnetic compatibility. Do not exceed the maximum values specified in the applicable standards.

If you have any problem, contact your local CHARDER MEDICAL service partner.

## ENVIROMENTAL

- ◆ All batteries contain toxic compounds; disposal of batteries should be delegated to a competent organization, complying with the deposit of Poisonous Waste Regulation 1972.
- ◆ Please do not incinerate batteries.
- ◆ The optimum operating temperature for the scale is 5°C to +35°C; although it will operate at higher and lower temperatures the scales battery life will be adversely effected.

## CLEANING

- ◆ We would recommend using alcohol based wipes or similar when cleaning the scales.
- ◆ Please do not use large amounts of water when cleaning the scales as this will cause damage to the scales electronics, you should also refrain from using corrosive liquids or high pressure washers.
- ◆ Always disconnect the scales from the mains power supply before cleaning.

## MAINTENANCE

- ◆ The scale does not require any routine maintenance. However, we recommend checking the scale's accuracy at regular intervals. The regularity of these checks is dependent on the level of use and the state of the scale. If any inaccuracies occur, please contact your local dealer or CHARDER MEDICAL service partner

## WEIGHING OPERATION

- ◆ Before reading detailed instructions on how to use all the weighing functions that are built into your scale, please read the following important guidelines:
- ◆ Always be sure that the display shows `Zero` before use, if it does not then please press the ZERO key.
- ◆ The Professional Medical scale is designed to detect when a stable weight is achieved, the indicator will `bleep` twice to indicate a stable weight value, your reading should be taken at this point.

## WARRANTY-LIABILITY

- ◆ If a fault or defect is present on receipt of the unit which is within CHARDER MEDICAL's scope of responsibility, CHARDER shall have the right to either repair the fault or supply a replacement unit. Replaced parts shall be the property of CHARDER. Should the fault repairs or replacement delivery not be successful, the statutory provisions shall be valid. The period of warranty shall be two years, beginning on the date of purchase. Please retain your receipt as proof of purchase. Should your scale require servicing, please contact your dealer or CHARDER MEDICAL Customer Service.
- ◆ No responsibility shall be accepted for damage caused through any of the following reasons: Unsuitable or improper storage or use, incorrect installation or commissioning by the owner or third parties, natural wear, changes or modifications, incorrect or negligent handling , overuse, chemical, electrochemical or electrical interference or humidity, unless this is attributable to negligence on the part of CHARDER MEDICAL.
- ◆ If operating, climatic or any other influences lead to a major change in conditions or material quality, the treaty for perfect unit functioning shall be rendered null and void. If CHARDER provides an individual warranty, this

means that the unit supplied will be free of faults for the length of the warranty period.

## DISPOSING OF THE SCALE

- ◆ This product is not to be treated as regular household waste, but should be handed in to an electrical/electronic equipment recycling centre.
- ◆ You can obtain further details from your local council, your municipal waste disposal company or the firm which you purchased the product


## FCC WARNING

This equipment has been tested and found to comply with the limits for a Class B digital device, pursuant to part 15 of the FCC Rules. These limits are designed to provide reasonable protection against harmful interference in a residential installation. This equipment generates uses and can radiate radio frequency energy and, if not installed and used in accordance with the instructions, may cause harmful interference to radio communications. However, there is no guarantee that interference will not occur in a particular installation. If this equipment does cause harmful interference to radio or television reception, which can be determined by turning the equipment off and on, the user is encouraged to try to correct the interference by one or more of the following measures:

- Reorient or relocate the receiving antenna.
- Increase the separation between the equipment and receiver.
- Connect the equipment into an outlet on a circuit different from that to which the receiver is connected.
- Consult the dealer or an experienced radio/TV technician for help.



Modifications not expressly approved by the manufacturer could void the user's authority to operated the equipment under FCC rules.

## SPECIFICATIONS

<b>MODEL#</b>	MS 6121R	
<b>Capacity Division</b>	250kg x 0.1kg	550lb x 0.2lb
<b>Accuracy</b>	±200g	±0.4lb
<b>Net Weight</b>	2.8kg	
<b>Units of Measure</b>	kg ; lb	
<b>Function keys</b>	ON/OFF, UNIT , TARE, HOLD/BMI ,  channel switch	
<b>Stabilisation time</b>	1-2 seconds	
<b>Operating temp.</b>	5°C - 35°C	
<b>Power supply</b>	DISPLAY : four 1.5V AA size batteries & Adaptor	
	PLATFORM : four 1.5V AA size batteries & Adaptor	
<b>Indicator display</b>	1.0" LCD display with 5 active digits	
<b>Wireless type</b>	Radio Frequency	
<b>Wireless channels</b>	3 channels	
<b>Dimensions</b>	348.5 x 355mm	

**\*MS6121R serves three wireless platforms at a time. Press channel switch button to change platform and channel to start measurement.**

## POWER SUPPLY & LOW BATTERY

1. The MS6121R scale uses 4 x AA size alkaline batteries both display and platform.
2. Original adaptor comes with scale for operation.
3. Low battery indication will display on LCD display when battery power is insufficient to perform the weighing.
4. When “” is displayed, please change batteries for platform.
5. When “” is displayed, please change batteries for display.

## ABOUT AUTO OFF FUNCTION

### DISPLAY

With batteries : 80sec off.

With adaptor: AUTO OFF function will be disabled.

Wireless with platform: 50sec off if no data comes from platform.

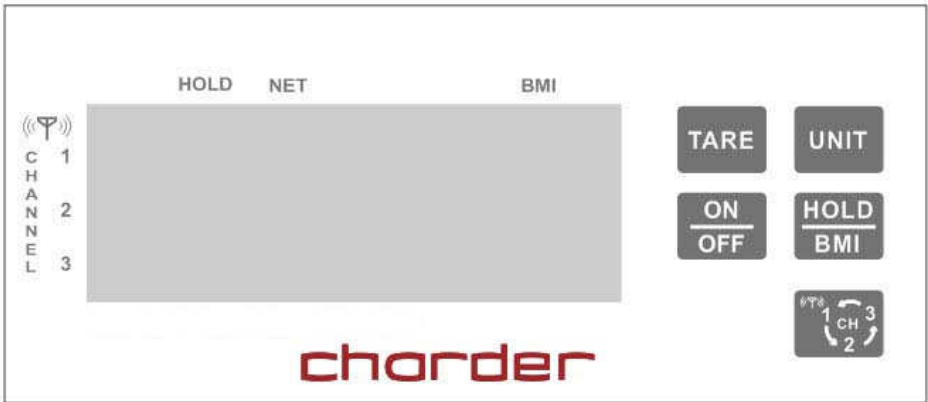
### PLATFORM

With batteries : 80sec to off.

With adaptor: AUTO OFF function will be disabled.



## PANEL AND LCD DISPLAY



## LCD DISPLAY

1. : Stable symbol
2. : Minor weight value
3. : Zero

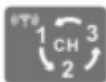
## KEY FUNCTION DESCRIPTION:

1. : To power ON and OFF the scale.
2. : Press to tare weight.
3. : Press this key to lock the weight value before or while weighing. To disable the weight lock (Hold) function, press

HOLD key again or pick up the weight (Tare weight also) from the platform; display will come to zero weighing



4. : Press to change measuring unit between kg and lb.



5. **change channel**

Press to change wireless channel.

## INSTRUCTION OF HOLD FUNCTION

1. Press HOLD key to enter into weighing lock mode.
2. The arrow pointing to hold mark will start to flicker and LCD will

display “”.

3. To have person stand on the scale; the scale will take the average of fluctuating weight and lock the weight on the display.
4. After the weight value is locked, press HOLD key again or pick up the weight (Tare weight also) from the platform to disable the hold function. (The arrow of hold and locked value will disappear and the instrument returns to normal mode.)

### **NOTE:**

- A. When the weighing lock (Hold) function is activated, all other keys and functions can not operate.
- B. After a weight value is locked, and weight still on the scale. Press HOLD key to disable the hold function, or press TARE key to disable the hold function and perform tare function.
- C. Before a weight value is locked, press TARE key will only perform tare function, but the hold function is not disabling.





# INSTRUCTION OF USING BMI FUNCTION

## Body Mass Index Categories

Classification of weight for adults over 18 years on the basis of Body Mass Index according to WHO, 2000 EK IV and WHO 2004 (WHO - World Health Organization).

Category	BMI (kg/m <sup>2</sup> )	Risk of diseases accompanying overweight
Underweight	< 18.5	low
Normal weight	18.5 – 24.9	average
Overweight	≥ 25.0	
Preobesity	25.0 – 29.9	slightly increased
I degree of obesity	30.0 – 34.9	increased
II degree of obesity	35.0 – 39.9	high
III degree of obesity	≥ 40	very high

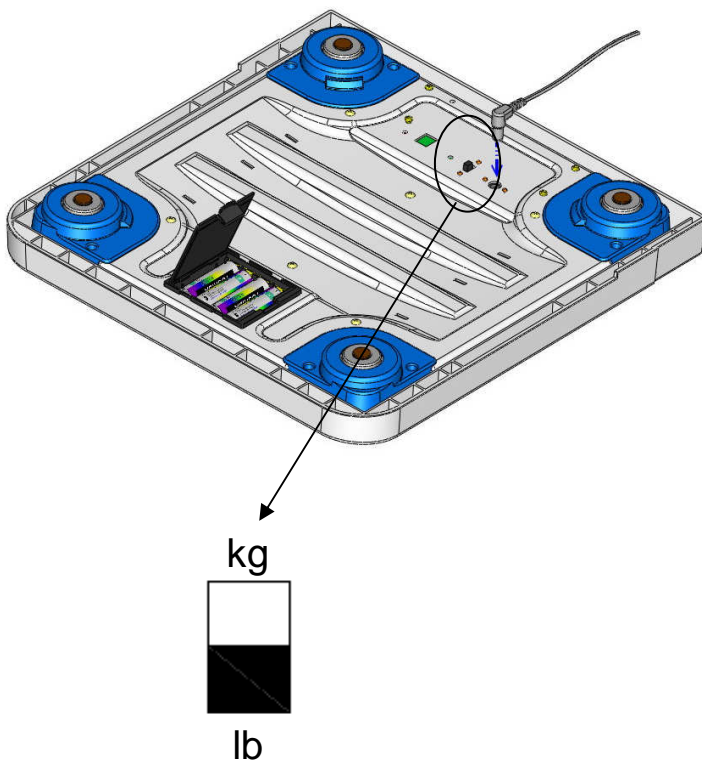
## INSTRUCTION OF HOW TO USE BMI FUNCTION

1. Switch on the scale and have the person who's going to be measured standing on the platform.
2. Long press  key three seconds to enable BMI mode.
3. The LCD display will show last input height and flashing.
4. Press  and  key to increase and decrease height.
5. Press  key when the height set up ready.
6. The scale will take the weight, height and calculate BMI according to information.
7. LCD will display BMI, weight and height in rotation.

8. Press  to disable BMI function.

## INSTRUCTION OF UNIT SWITCH


Please find a switch pin at the bottom of the scale as shown below




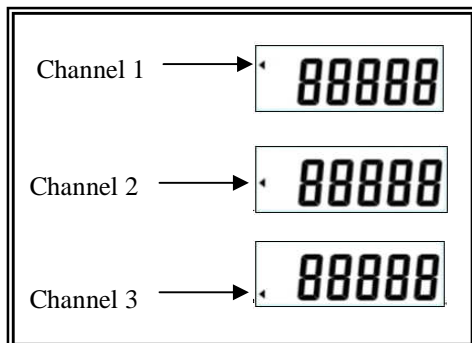
# INSTRUCTION OF CONNECTING WIRELESS SCALE

1. Charder wireless scale MS6121R has a wireless display which has three wireless channels can serve total three wireless platforms at one time.

2. Switch channel between 1, 2 or 3 channel at bottom of platform before connecting to display.

3. Press  button to match platform channel. The black arrow changes from channel 1, 2 and 3.

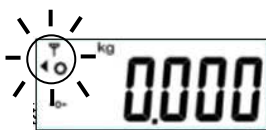
4. A wireless symbol  appears at upper left corner when connecting to wireless platform.



5. A stable symbol appears and system back to zero after

connection completed.

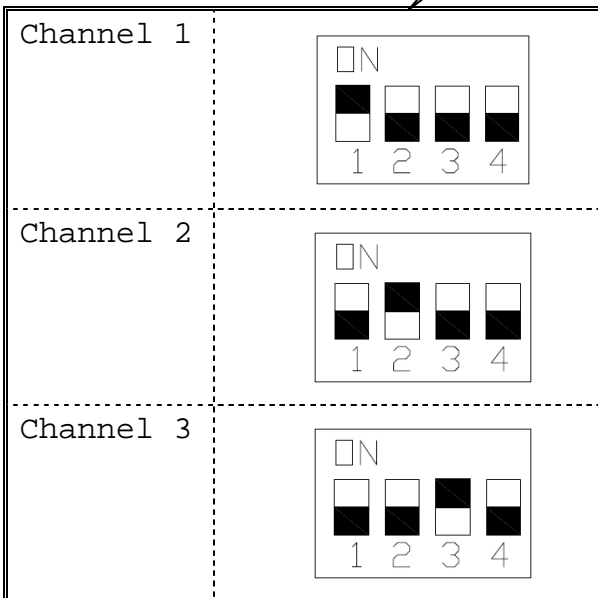
6. Start to weigh after system zero.



## SWITCHING WIRELESS CHANNEL

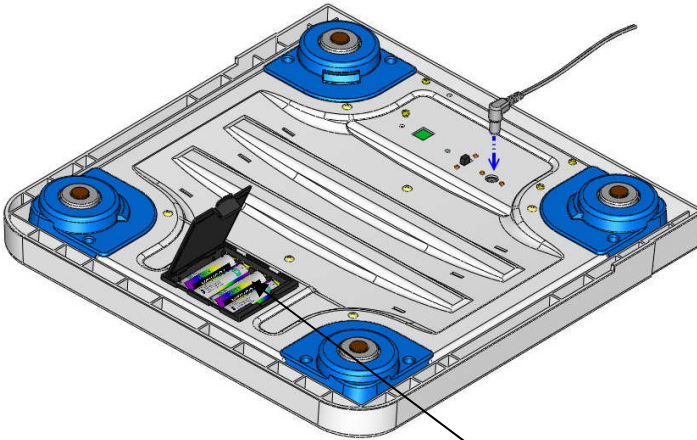
1. To switch wireless channel at wireless platform, please find the dip switch at the bottom of the scale. To select any of three channels please follow drawing below.
2. Re-power on both the platform and the indicator after channel switched to start weighing procedure.

\*\*\*Pin 4 is not in use.



## INSTALLING THE BATTERY

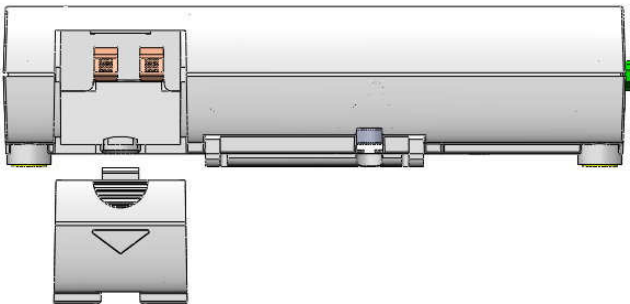
### INSTALLING BATTERY IN THE PLATFORM.



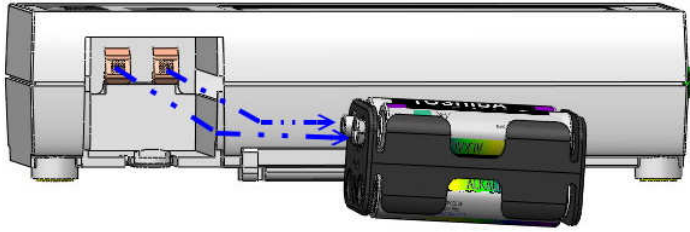
Installing 4 AA 1.5V batteries

***You can also use the adaptor as power supply.***

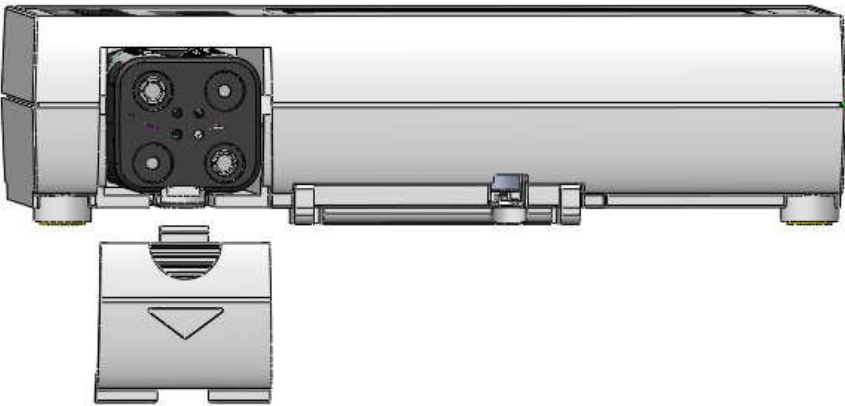
### INSTALLING BATTERY IN THE DISPLAY



Remove battery  
compartment cover



Place new 4 \* AA 1.5V batteries into the battery compartment. Watch the side of battery compartment and install it.

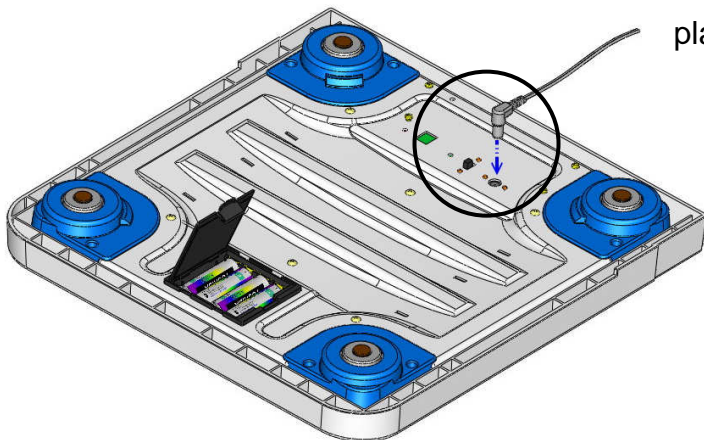


Install battery compartment cover.



# INSTRUCTION OF CHARGE & CONNECTION

Plug to charge the platform.



Plug to charge the display



RS232 port to connect with PC

# USING PRINT FUNCTION

Print function is only available for some specific models, please make sure whether the model has print function or not.

## A. Using Computer to print out the results.

After taking the weight and BMI, please follow instruction below to print the results:

### 1. Start Hyper Terminal

Step.1- Click on Start Button.

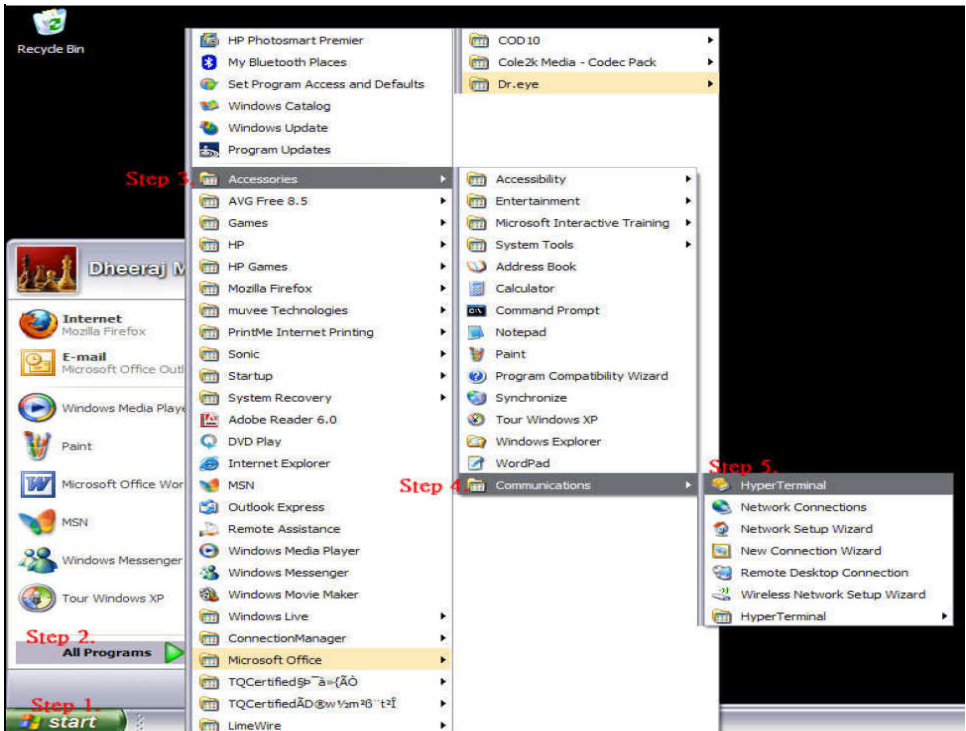
Step.2- Go to All Programs.

Step.3- Select Accessories.

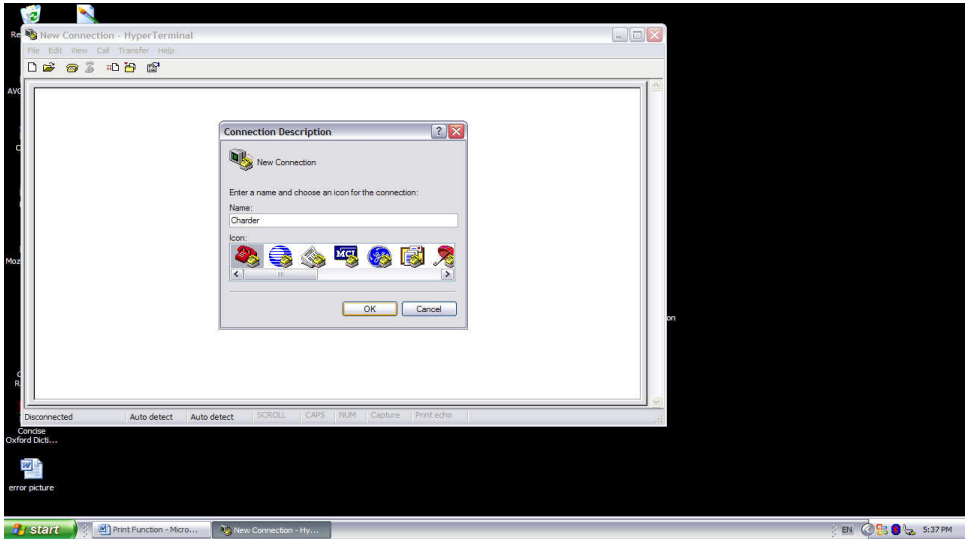
Step.4- Find Communications.

Step.5- In Communications section click on HyperTerminal.

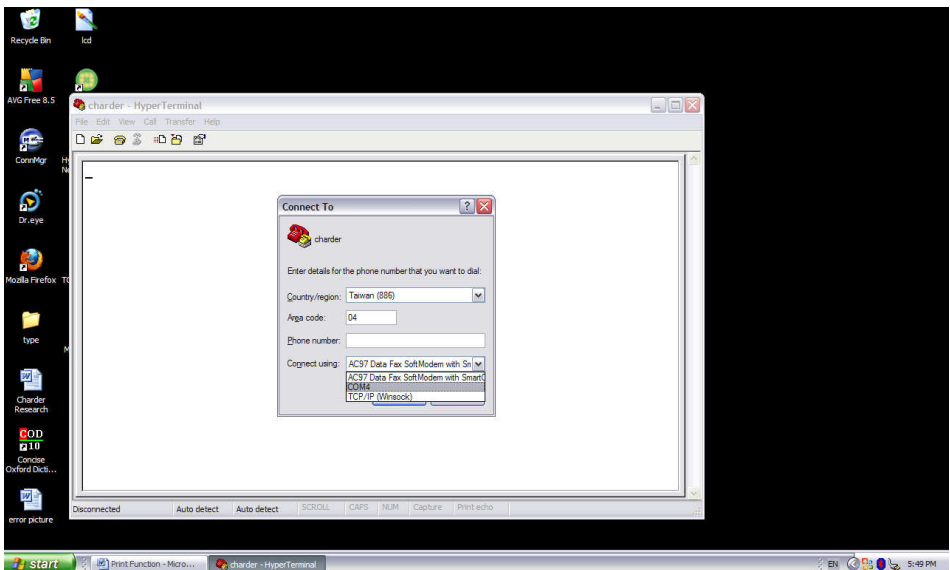
### Step1~5



## Step.6-Name the connection and click OK Button

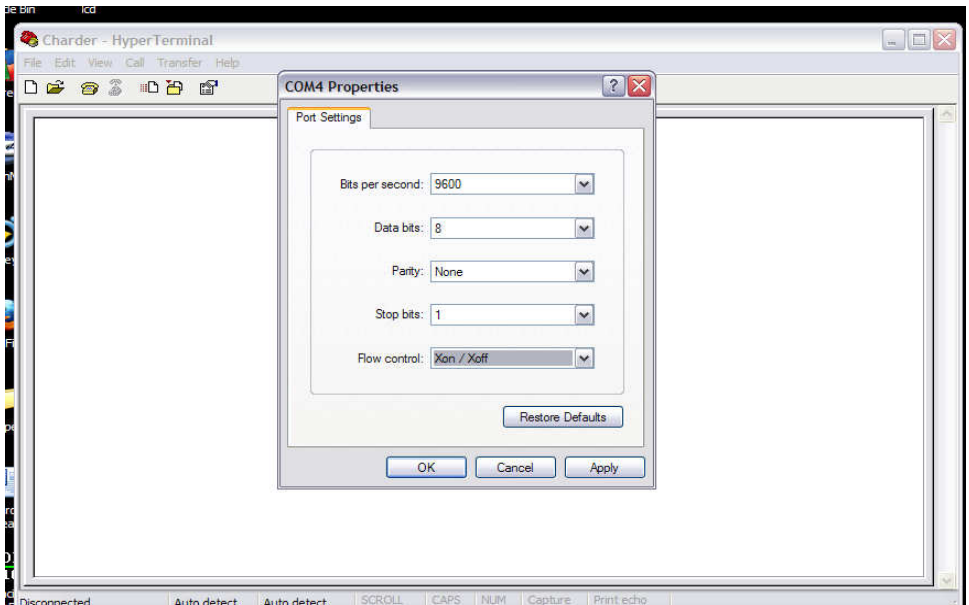


## Step.7- Select COM (1, 2, 3...4) under Connect Using Section and press OK.



## Step.8- Set Port Settings

- Set up as below:
  - BAUD RATE: 9600 bps
  - DATA BITS: 8 bits
  - PARITY : None
  - STOP BITS: 1 bit
  - FLOW CONTROL: NONE or Xon/Xoff
  - Click OK button to complete the setting.


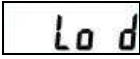


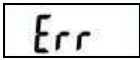



## Step.9- Print out the results

After weighing and calculating BMI of the patient, press P on the PC key board. The results will appear on the computer screen as below.

**WEIGHT 60.0 kg**  
**HEIGHT 170.0 cm**  
**B.M.I 20.8**

## ERROR MESSAGE

MESSAGE	DESCRIPTION
	Indicator Low battery This warning shows that the voltage of battery is too low to use. Please replace new batteries or plug the AC adaptor for operation.
	Deck Low battery This warning shows that the voltage of battery is too low to use. Please replace new batteries or plug the AC adaptor for operation.
	EEPROM error (Indicator) The program of the indicator has error.
	EEPROM error (deck) The program of the deck has error.
	Overload or counting error (too high) The loading is over limit when power on, please reduce the loading and try again.
	Counting error (too low) The loading is lower than limit when power on, please increase the loading and try again.



### **Manufacturer's Declaration of Conformity**

This product has been manufactured in accordance with the harmonized European standards, following the provisions of the below stated directives:

**Electro Magnetic Compatibility Directive 2014/30/EU**

**Low Voltage Directive 2014/35/EU**

### **FCC CLASS B Declaration of Conformity**

This device complies with the limits for a Class B digital device, pursuant to

Part 15 of the FCC Rules

Manufactured by:



Charder Electronic Co., Ltd.  
No.103, Guozhong Rd., Dali Dist.,  
Taichung City, Taiwan (R.O.C.) 412

FDA no.: D051882