
charder®



VS 2000

USER MANUAL

Please keep the instruction manual at hand all the time for future reference.

TABLE OF CONTENTS

PREFACE	2
GENERAL INFORMATION	2
SAFETY INSTRUCTION	2
ENVIROMENTAL	3
CLEANING	3
MAINTENANCE	3
WEIGHING OPERATION	3
WARRANTY-LIABILITY	4
DISPOSING OF THE SCALE	4
SPECIFICATION	5
PANEL	6
KEY FUNCTIONS	6
LCD SYMBOL DESCRIPTION	7
USING SCALE	8
USING HOLD FUNCTION	8
USING TARE FUNCTION	10
VS 2000: SET-UP	11
INSTRUCTION FOR CHARGE AND CONNECT	12
INSTRUCTIONS FOR REPLACING BATTERIES	13
ERROR MESSAGE	14

PREFACE

Thank you for choosing CHARDER MEDICAL product. All features of this product were designed to state of the art and are optimized for simple and straightforward use. If you have any query or experience any problem not addressed in the operating instructions, please contact your CHARDER MEDICAL service partner, or visit us on the Internet at www.chardermedical.com

GENERAL INFORMATION

We strongly recommend you use this device on flat and hard surface. Any soft surface, like carpet will cause inaccuracy.

SAFETY INSTRUCTION

Before putting the device into use, please read with care the information given in the Operating Instructions. They contain important instructions for installation, proper use and maintenance of the device.

The manufacturer shall not be liable for damages arising out of failure to heed the following instructions:

- ◆ When using electrical components under increased safety requirements, always comply with the appropriate regulations.
- ◆ Improper installation will render the warranty null and void.
- ◆ Ensure the voltage marked on the power supply unit matches your main power supply.
- ◆ This device is designed for use indoors.
- ◆ Observe the permissible ambient temperatures for use
- ◆ The device meets the requirements for electromagnetic compatibility. Do not exceed the maximum values specified in the applicable standards.

If you have any problem, contact your local CHARDER MEDICAL service partner.

ENVIROMENTAL

- ◆ All batteries contain toxic compounds; disposal of batteries should be delegated to a competent organisation, complying with the deposit of Poisonous Waste Regulation 1972.
- ◆ Please do not incinerate batteries.
- ◆ The optimum operating temperature for the scale is 5°C to +35°C; although it will operate at higher and lower temperatures the scales battery life will adversely be effected.

CLEANING

- ◆ We would recommend using alcohol based wipes or similar when cleaning the scales.
- ◆ Please do not use large amounts of water when cleaning the scales as this will cause damage to the scales electronics, you should also refrain from using corrosive liquids or high pressure washers.
- ◆ Always disconnect the scales from the mains power supply before cleaning.

MAINTENANCE

- ◆ The scale does not require any routine maintenance. However, we recommend checking the scale's accuracy at regular intervals. The regularity of these checks is dependent on the level of use and the state of the scale. If any inaccuracies occur, please contact your local dealer or CHARDER MEDICAL service partner.

WEIGHING OPERATION

Before reading detailed instructions on how to use all the weighing functions that are built into your scale, please read the following important guidelines:

- ◆ Always be sure that the display shows `Zero` before use, if it does not then please press the ZERO key.
- ◆ The device is designed to detect when a stable weight is achieved, the indicator will `bleep` twice to indicate a stable

weight value, your reading should be taken at this point.

WARRANTY-LIABILITY

- ◆ If a fault or defect is present on receipt of the unit which is within CHARDER MEDICAL's scope of responsibility, CHARDER shall have the right to either repair the fault or supply a replacement unit. Replaced parts shall be the property of CHARDER. Should the fault repairs or replacement delivery not be successful, the statutory provisions shall be valid. The period of warranty shall be two years, beginning on the date of purchase. Please retain your receipt as proof of purchase. Should your scale require servicing, please contact your dealer or CHARDER MEDICAL Customer Service.
- ◆ No responsibility shall be accepted for damage caused through any of the following reasons: Unsuitable or improper storage or use, incorrect installation or commissioning by the owner or third parties, natural wear, changes or modifications, incorrect or negligent handling , overuse, chemical, electrochemical or electrical interference or humidity, unless this is attributable to negligence on the part of CHARDER MEDICAL.
- ◆ If operating, climatic or any other influences lead to a major change in conditions or material quality, the treaty for perfect unit functioning shall be rendered null and void. If CHARDER provides an individual warranty, this means that the unit supplied will be free of faults for the length of the warranty period.

DISPOSING OF THE SCALE

- ◆ This product is not to be treated as regular household waste, but should be handed into an electrical/electronic equipment recycling centre.
- ◆ You can obtain further details from your local council, your municipal waste disposal company or the firm which you purchased the product.





SPECIFICATION

Model	VS 2000	
Capacity	250kg x 0.1kg / 550lb x 0.2lb	300kg x 0.1kg / 660lb x 0.2lb
Weight Unit	kg / lb	
LCD Display	1.0" LCD display with 5 1/2 digits	
Dimension	109 x 51 x 4.3 cm 43 x 20 x 1.7 inch	
Key Functions	ON/OFF, HOLD, UNIT, TARE	
Power Supply	<ul style="list-style-type: none">➤ 6-AA size batteries➤ 12V- 15V adapter	
Operation Temperature	5°C / 35°C	

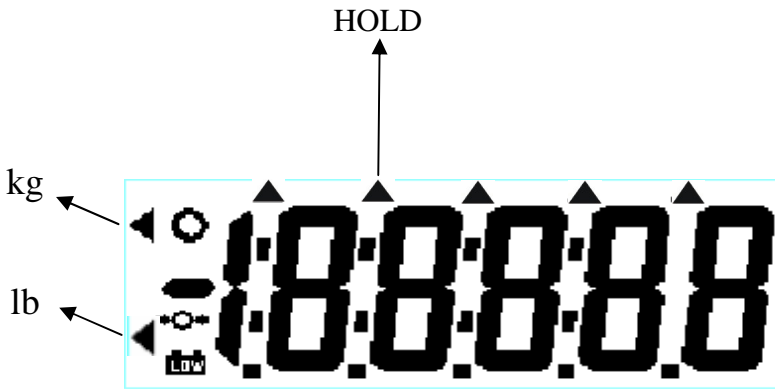
PANEL



KEY FUNCTIONS

Key	Description
	Turn ON/OFF the scale
	To select the weighing unit. (kg/lb)
	To hold weighing result on the display / determine stable weighing value
	Tare weight during weighing process.

LCD SYMBOL DESCRIPTION



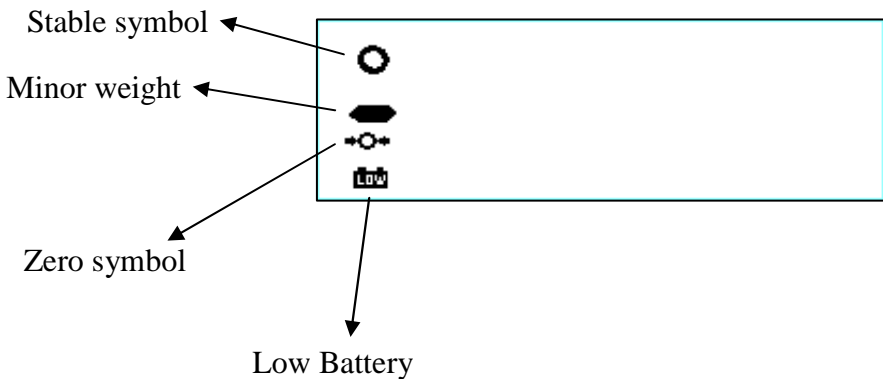
Definitions

Stable symbol: To indicate that the weight is stable..

Minor weight: Weight under zero.


Zero symbol: Weight is at zero point.

Low battery: Battery need to charge or replaced.



USING SCALE

WEIGHING

- ◆ Switch on the scale using  key. The diagnostic scale self-check is performed and the software version is displayed.
- ◆ The „**0,00 kg**” weight displays on the screen, now the scale is ready for weighing.
- ◆ Place a person in the middle of the scale. Wait until the scale stabilizes and stable sign (○) shows on the screen

Direction:

If a person is heavier than the scale capacity, the display will show the „Err” prompt (= overload).

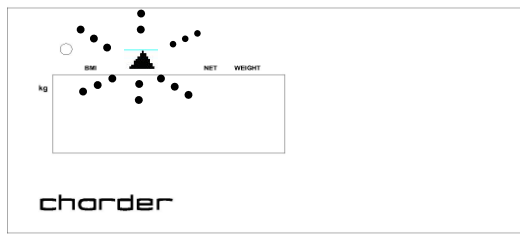
USING HOLD FUNCTION

VS 2000 is provided with the integrated hold function (determination of average value). It enables animal to be weighed accurately although they are not still on the scale plate. Once the HOLD key is pressed, the weight reading will remain on the display even after the animal has been moved from the scale platform, so the reading can easily be read.

Note: Determination of average value is not possible if the animal is moving too much.

- Switch ‘ON’ the scale using **[ON/OFF]** key. The diagnostic self-checks is performed. The scale is ready for weighing when the „**0.0 kg**” displays on the screen.
- Place animal in the center of the scale plate.
- Press the **[HOLD]** key. When the triangle is flashing on the display, the scale records the fluctuating weight values and then calculates average weight and displays the result on the screen.

- Move the animal from the scale platform, the weight reading will remain on the display.
- Press the **[HOLD]** key again to return the scale to the normal weighing mode.
- HOLD function can be activated before or after putting the weight on the tread platform. But in case of weighing unstable animal it is recommended to press HOLD key before the animal moves on the tread platform.



(1)



(2)

USING TARE FUNCTION

Tare allows the user to zero the instrument to cancel the weight of a container/ clothes from the reading of the instrument, thus giving the true weight of the animal being tested.

- Place the object need to be tare on the tread platform.
- Press TARE key after the weight stabilizes and stable sign displays.
- Move the animal need to be weighed on the scale platform(without removing the tare object)

To delete the saved tare value, remove the tare object from the tread platform and press **[TARE]** key.

VS 2000: SET-UP

Switch ON the scale and long press [UNIT] key for 3 seconds.
First “SETUP” and then “A.OFF” will display successively.

AUTO-OFF TIME SETUP

This enables operator to select the auto turn OFF time of the device.

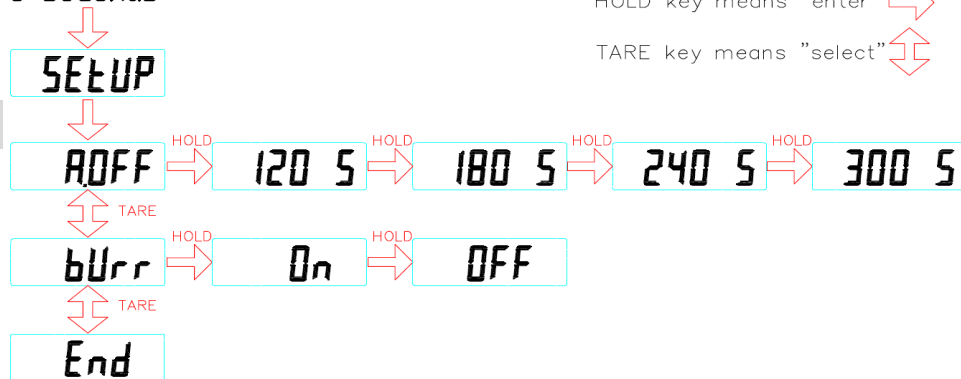
BUZZER ON/OFF SETUP

This enables operator to select beep sound ON/OFF.

Auto off time: 120 sec/180 sec/240 sec/300 sec/off

Buzzer: On/Off

Press ZERO key
3 seconds



Note: To confirm the settings, please press HOLD when

End displays on the display.

INSTRUCTION FOR CHARGE AND CONNECT

If **. Lo** prompt displays on the LCD, please charge the scale with VS 2000 exclusive adaptor or replace the batteries.
Locate adaptor plug-in at the back side of indicator.



CAUTION:

- Always connect the AC adaptor with the indicator before connecting to the mains power supply.
- Please disconnect the adaptor from main power supply before taking out the AC adaptor pin from indicator.

INSTRUCTIONS FOR REPLACING BATTERIES



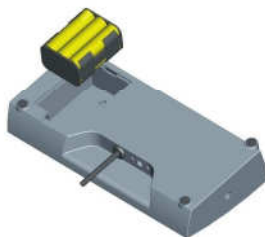
1. Remove battery cover.



2. Take battery housing out.



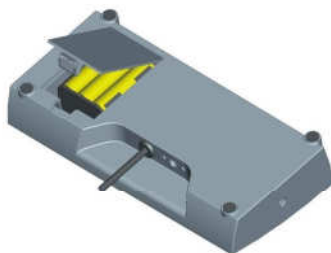
3. Installing six AA batteries.



4. Make sure battery direction is correct.

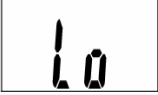








5. Put battery housing back.



6. Put battery cover back.

ERROR MESSAGE

ERROR MESSAGE	REASON	ACTION
	Low Battery: This warning shows that the voltage of battery is too low to use	Please replace a new battery or plug the AC adaptor for operation.
	Overload: The total load exceeds the maximum capacity of scale	Please reduce the loading and try again.
	Counting error (too high): Indicates that the signal from the load cell/s is too height	This error is normally caused by a serious fault on the scales such as a faulty load cell or wiring. Please contact the local service representative.
	Counting error (too low): Indicates that the signal from the load cell/s is too low	This error is normally caused by a serious fault on the scales such as a faulty load cell or wiring. Please contact the local service representative.
	Zero count over calibration zero range +10% while power on	Please re-calibrate the instrument.
	Zero count under calibration zero range -10% while power on	Please re-calibrate the instrument.
	EEPROM Error: Indicates that there is a fault with the scales software	This error is normally caused by a serious fault on the scales such as a faulty load cell or wiring. Please contact the local service representative.



Manufacturer's Declaration of Conformity

This product has been manufactured in accordance with the harmonized European standards, following the provisions of the below stated directives:

Electro Magnetic Compatibility Directive 2014/30/EU

Low Voltage Directive 2014/35/EU

FCC CLASS B Declaration of Conformity

This device complies with the limits for a Class B digital device, pursuant to Part 15 of the FCC Rules

Manufactured by:



Charder Electronic Co., Ltd.

No.103, Guozhong Rd., Dali Dist.,
Taichung City 412, Taiwan (R.O.C.)