



Manufacturer's Declaration of Conformity

This product has been manufactured in accordance with the harmonized European standards, following the provisions of the below stated directives:

Electro Magnetic Compatibility Directive 2014/30/EU

Low Voltage Directive 2014/35/EU

FCC CLASS B Declaration of Conformity

This device complies with the limits for a Class B digital device, pursuant to Part 15 of the FCC Rules

charder[®]



Manufactured by:



Charder Electronic Co., Ltd.

No.103, Guozhong Rd., Dali Dist.,

Taichung City 412 , Taiwan (R.O.C)





VS2400

USER MANUAL

TABLE OF CONTENTS

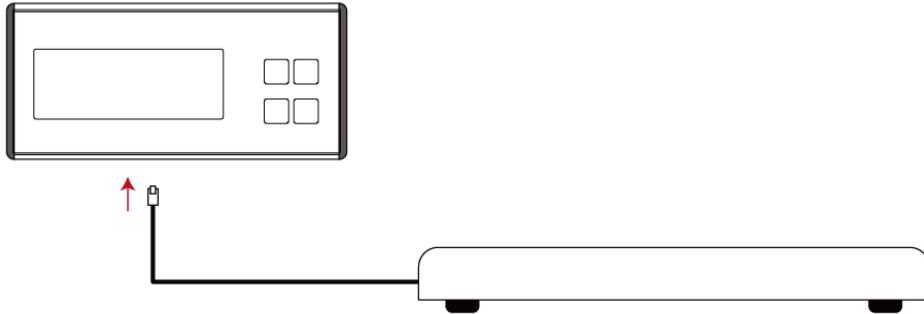
PREFACE.....	2
GENERAL INFORMATION	2
SAFETY INSTRUCTION	2
ENVIROMENTAL.....	4
CLEANING.....	4
MAINTENANCE.....	5
WEIGHING OPERATION	5
WARRANTY-LIABILITY	6
DISPOSING OF THE SCALE.....	8
SPECIFICATIONS	9
KEY FUNCTIONS.....	10
HOW TO USE HOLD FUNCTION.....	11
INSTRUCTION FOR POWER SUPPLY	12
ERROR MESSAGE	14

ERROR MESSAGE

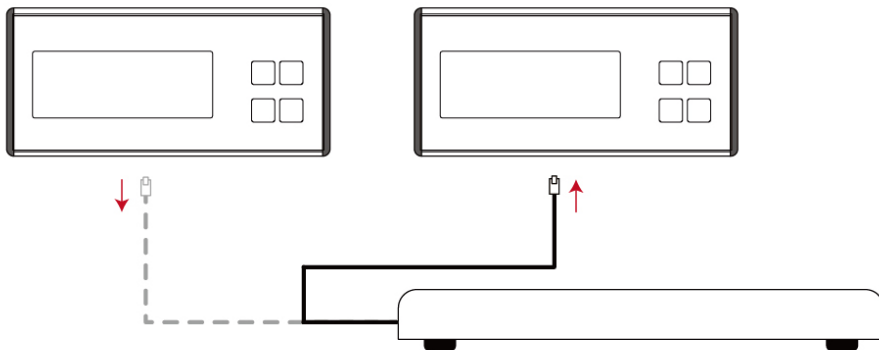
ERROR MESSAGE	REASON	ACTION
	Low battery	Connect the DC adaptor to recharge the battery.
	EEPROM error	If the EEPROM memory IC damage, the display will show this message.
	AD board error	If AD board can't transfer data to main board, the display will show this message.
	Overload	If the total load exceeds the capacity of the scale, the display will show this message. The weight must be removed immediately from the scale to prevent damage.

- RJ45 port connection

This user-friendly design would offer the simplest way on veterinary care. The feature includes easy-to-install that operator can plug in the RJ45 port from platform wire to connect display together.



If the display is broken, get another display to be plugged in with RJ45 port without re-calibration procedures which simplifies the installation.



PREFACE

Thank you for choosing CHARDER MEDICAL product. All features of this product were designed to state of the art and are optimized for simple and straightforward use. If you have any queries or experience any problems not addressed in the operating instructions, please contact your CHARDER MEDICAL service partner, or visit us on the Internet at www.chardermedical.com

GENERAL INFORMATION

We strongly recommend you use the scales on flat and hard surface. Any soft surface, like carpet will cause inaccuracy.

SAFETY INSTRUCTION



Before putting the device into use, please read with care the information given in the Operating Instructions. They contain important instructions for installation, proper use and maintenance of the device.

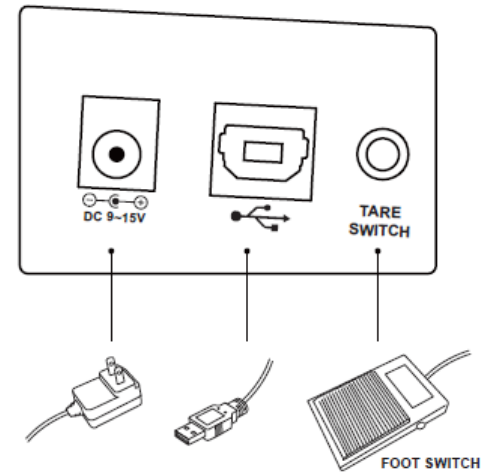
The manufacturer shall not be liable for damages arising out of failure to heed the following instructions:

- ◆ When using electrical components under increased safety requirements, always comply with the appropriate regulations.

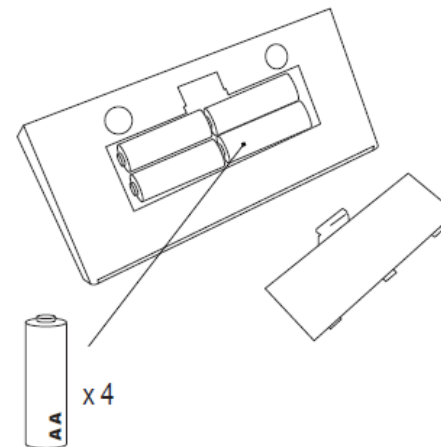
- ◆ Improper installation will render the warranty null and void.
 - ◆ Ensure the voltage marked on the power supply unit matches your mains power supply.
 - ◆ This device is designed for use indoors.
 - ◆ Observe the permissible ambient temperatures for use
 - ◆ The device meets the requirements for electromagnetic compatibility. Do not exceed the maximum values specified in the applicable standards.
- If you have any problem, contact your local CHARDER MEDICAL service partner.

INSTRUCTION FOR POWER SUPPLY

Plug AC adapter into the indicator (Left-hand side) to supply power to indicator.



* The foot switch is when operator proceeding operation for animals could press foot switch to tare the unwanted weight (such as towel, blanket).



You could also change batteries from the back side of the display.

Description:

➤ **ON/ZERO/OFF**

Press to switch scales ON, OFF and ZERO.

➤ **HOLD**

Press to lock the weight of subject.

➤ **UNIT**

Press to switch between kg or lb.

➤ **TARE**

Press to tare the unwanted weight on platform (such as towel or blanket). *Tare the weight of subject previously so that the operator can get the net weight only.



➤ **HAND WAVE MOTION**

Hand wave motion could also tare the unwanted weight on platform if operator does not press the TARE button.

HOW TO USE HOLD FUNCTION

By using the HOLD function the identified weight will be stored and is shown on the display even if the animal stepped already off the scale.

- 1) Press ON/OFF to power on the scale.
- 2) Step on the scale to weigh after stable "0.0" symbol appears.
- 3) Press HOLD key while subject is being weighed.
- 4) The arrow will indicate the HOLD on the panel.
- 5) The LCD shows weight after the subject move off the platform.
- 6) Press HOLD again to disable HOLD feature.

ENVIROMENTAL

- ◆ All batteries contain toxic compounds; disposal of batteries should be delegated to a competent organization, complying with the deposit of Poisonous Waste Regulation 1972.
- ◆ Please do not incinerate batteries.
- ◆ The optimum operating temperature for the scale is 5°C to +35°C; although it will operate at higher and lower temperatures the scales battery life will be adversely effected.

CLEANING

- ◆ We would recommend using alcohol based wipes or similar when cleaning the scales.
- ◆ Please do not use large amounts of water when cleaning the scales as this will cause damage to the scales electronics, you should also refrain from using corrosive liquids or high pressure washers.
- ◆ Always disconnect the scales from the mains power supply before cleaning.

MAINTENANCE

- ♦ The scale does not require any routine maintenance. However, we recommend checking the scale's accuracy at regular intervals. The regularity of these checks is dependent on the level of use and the state of the scale. If any inaccuracies occur, please contact your local dealer or CHARDER MEDICAL service partner.

WEIGHING OPERATION

Before reading detailed instructions on how to use all the weighing functions that are built into your scale, please read the following important guidelines:

KEY FUNCTIONS

Display capacity for reference



(this is without hand wave motion)

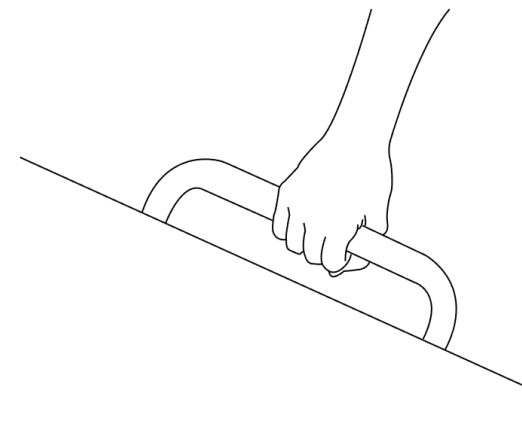


(this is with hand wave motion to TARE unwanted weight)

SPECIFICATIONS

Model	VS 2400	
Capacity	150kg x100g ; 330lb x 0.2lb	180kg x100g ; 400lb x 0.2lb
Accuracy	±850g	±1000g
Measuring Unit	kg / lb	
LCD Display	1.4" LCD digital display	
Dimension	Platform size: 900 mm x 550 mm x 25 mm	
Key Functions	ON/OFF, HOLD, UNIT, TARE	
Power Supply	ADAPTOR (standard) & 4x AA battery (optional)	
Optional	Hand wave motion/ Foot switch	
Operating Temperature	5°C / 35°C	

- ◆ Always be sure that the display shows `Zero` before use, if it does not then please press the ZERO key.
- ◆ The Professional scale is designed to detect when a stable weight is achieved, the indicator will `bleep` twice to indicate a stable weight value, your reading should be taken at this point.
- ◆ Very easy to be used and as a portable scale, the handle bar ensures the safety and simplicity.



WARRANTY-LIABILITY

- ◆ If a fault or defect is present on receipt of the unit which is within CHARDER MEDICAL's scope of responsibility, CHARDER shall have the right to either repair the fault or supply a replacement unit. Replaced parts shall be the property of CHARDER. Should the fault repairs or replacement delivery not be successful, the statutory provisions shall be

valid. The period of warranty shall be two years, beginning on the date of purchase. Please retain your receipt as proof of purchase. Should your scale require servicing, please contact your dealer or CHARDER MEDICAL Customer Service.

- ◆ No responsibility shall be accepted for damage caused through any of the following reasons: Unsuitable or improper storage or use, incorrect installation or commissioning by the owner or third parties, natural wear, changes or modifications, incorrect or negligent handling , overuse, chemical, electrochemical or electrical interference or humidity, unless this is attributable to negligence on the part of CHARDER MEDICAL.
- ◆ If operating, climatic or any other influences lead to a major change in conditions or material quality, the treaty for perfect unit functioning shall be rendered null and void. If CHARDER provides and individual warranty, this means that the unit supplied will be free of faults for the length of the warranty period.

DISPOSING OF THE SCALE

- ◆ This product is not to be treated as regular household waste, but should be handed in to an electrical/electronic equipment recycling centre.
- ◆ You can obtain further details from your local council, your municipal waste disposal company or the firm which you purchased the product.