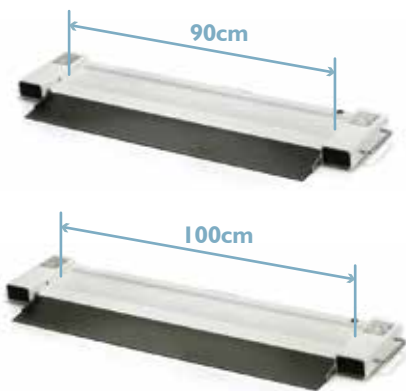


MS6080

Wireless Bed Scale

The MS6080 Bed Scale simplifies the weight measurement procedure for bedridden patients. Two portable beam scales are placed next to the bed, which is rolled onto the scale. After deducting the weight of the bed with the press of a button, the patient's exact weight can thus be measured.

Results can be viewed on the easy-to-read color touchscreen and transmitted wirelessly to EMR systems, for a more streamlined and efficient measurement process.



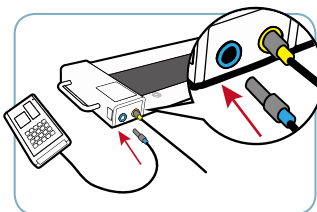
Two sizes platform are available



Image contains optional indicator stand

Functions

- BMI
- Hold
- Tare
- Pre-Tare
- Color Touchscreen
- Castor Wheels
- Portable Handle
- Bubble Level
- Adjustable Feet
- Low-profile ramp



Color-coded connectors for easy installation



Push bed onto scale via foldable ramps



Built-in castor wheels



Handles for portability

Specifications

Capacity	500 kg 600 kg
Graduation	0.2 kg 0.1 kg < 300kg > 0.2 kg
Overall Dimensions	1256(W) x 366(D) x 61.5(H) mm
Device Weight	11.4 kg (per beam)
Accessories	Barcode Scanner, Indicator Stand
Data Transfer	USB, Wireless
Software	Smart Data Manager